

LEGISLATIVE ASSEMBLY OF ALBERTA
 Member EDR 2020-21 30th Leg
 046 - Edmonton-Whitemud - MLA Rakhi Pancholi
 For Expenses Processed Oct 1- Dec 31, 2020

	Budget	Used this Quarter	Used To-Date
Financial Reporting - \$ (Receipts attached)			
Transportation			
Fuel and Minor Maintenance - \$			
MLA Parking Cap - \$	\$900.00	\$26.00	\$26.00
Other Travel - Parking - \$			
Member Travel (overnight stay in constituency) - \$			
Taxi, Bus Travel - \$			
Vehicle Lease/ Rental (Edmonton or Calgary unlimited) - \$			
Member Travel (Meal Per Diems) - \$			
Accommodation			
Edmonton Accommodation Allowance (\$23,160.00/yr max)			
Travel Accommodations Allowance			
Travel Accommodations Allowance (days; 10 max) - NF	10.0		
Other			
Hosting - \$			
Event Tickets Disclosable - \$			
Non-Financial Reporting			
Use of Private Automobile (50.5 cents per km)			
Constituency Travel MLA (KM) - NF	35,000.0		
Constituency Travel Staff (KM) - NF			
Total Constituency Travel (KM) - NF	35,000.0		
Special Trips (5 trips per year) - NF	5.0	1.0	1.0
Travel To and From the Capital			
Travel by Air, Bus or Train (Unlimited Trips) - NF			
Use of a Private Automobile (52 trips per year) - NF			
Other Travel			
Vehicle Rental (5 Days maximum anywhere in Alberta) - NF	5.0		

\$ - Reported on CAD dollar amount of actual expense

NF - Reported based on number of trips, number of kilometres, or number of days

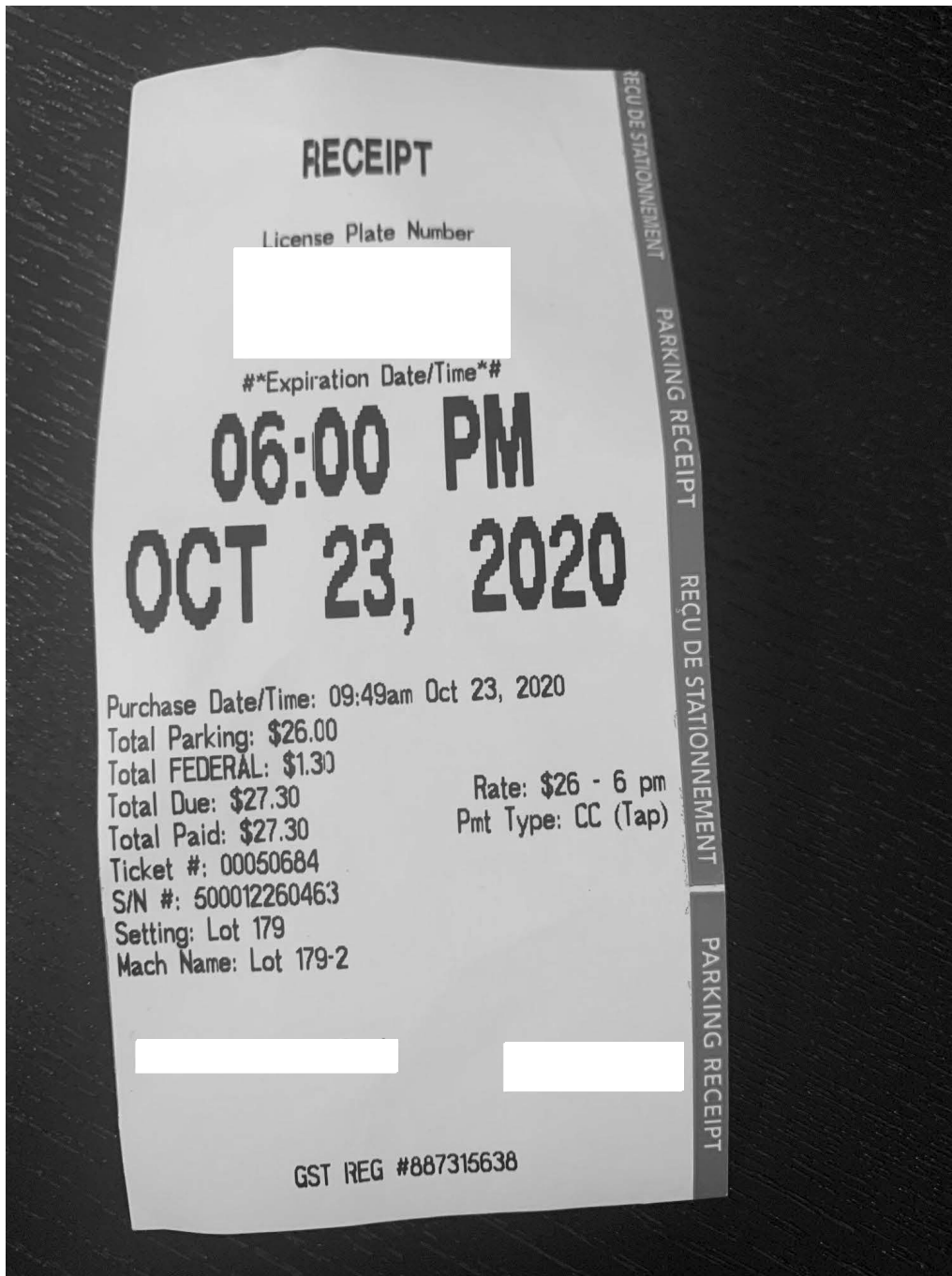
Budget reported is the maximum annual amount that may be claimed

GST is not included in the \$ amounts as the Legislative Assembly is GST/HST - exempt



Legislative Assembly of Alberta
ME10593 - Members' Other Expenses Claim Form

Receipt Description	Parking in Calgary
Member Name	Rakhi Pancholi
Claimant	Rakhi Pancholi
Expense Category	Member Parking



I hereby certify that the whole of the expenditure was incurred and that amounts claimed have not previously been paid to me or on my behalf.