



LEGISLATIVE ASSEMBLY OF ALBERTA
Member EDR 2025-26
072 - Lethbridge-West - Rob Miyashiro
For Expenses Processed Jan 1 - Mar 31, 2026

	Budget	Reimbursed This Quarter	Reimbursed to Date
Financial Reporting - \$ (Receipts attached)			
Transportation			
Fuel and Minor Maintenance - \$			
MLA Parking Cap - \$	\$900	\$181.1	\$181.1
Other Travel - Parking - \$			
Member Travel (overnight stay in constituency) - \$			
Taxi, Bus Travel - \$			
Vehicle Lease/ Rental (Edmonton or Calgary unlimited) - \$			
Member Travel (Meal Per Diems) - \$		\$1107.6	\$3529.6
Accommodation			
Edmonton Accommodation Allowance (\$26,400.00/yr max)	\$26400	\$6600	\$26400
Travel Accommodations Allowance			
Travel Accommodations Allowance (days; 10 max) - NF	10		
Other			
Hosting - \$		\$297.91	\$871.04
Event Tickets Disclosable - \$			\$175
Non-Financial Reporting			
Use of Private Automobile (50.5 cents per km)			
Constituency Travel MLA (KM) - NF	35000	967.0	5,441.0
Constituency Travel Staff (KM) - NF		192.0	359.3
Total Constituency Travel (KM) - NF	35,000.0	1,159.0	5,800.3
Adverse Driving Conditions	0		
Special Trips (5 trips per year) - NF	5		
Travel To and From the Capital			
Travel by Air, Bus or Train (Unlimited Trips) - NF	0		
Use of a Private Automobile (52 trips per year) - NF	52	5.5	14.5
Other Travel			
Vehicle Rental (5 Days maximum anywhere in Alberta) - NF	5		

\$ - Reported on CAD dollar amount of actual expense

NF - Reported based on number of trips, number of kilometres, or number of days

Budget reported is the maximum annual amount that may be claimed

GST is not included in the \$ amounts as the Legislative Assembly is GST/HST - exempt

Note:

Expenses are reported in the Quarter the expense is reimbursed and not necessarily the Quarter the expense was incurred.

The reader should take this into account when reviewing the disclosure



Legislative Assembly of Alberta

ME58248 - Members' Other Expenses Claim Form

MLA Parking Cap: \$181.10 + GST

Receipt Description	Lethbridge Parking January 2025 - February 2026
Member Name	Rob Miyashiro
Claimant	Rob Miyashiro
Expense Category	Member Parking

flowbird.

Internet website: <https://www.flowbirdapp.com>

Proof of parking

Report date: Feb 9, 2026, 3:15:17 PM

Login

Full name: Rob Miyashiro

Vehicle	Location	City	Rate	Start - End (Duration)	Item	Price	Amount
[REDACTED]	City of Lethbridge - Day Use Zone 10 (6608)	City of Lethbridge	6439 - Daily Rate	Feb 5, 2026, 12:51:57 PM Feb 5, 2026, 4:00:00 PM (3h 8m)	Parking Service fee	\$1.80 \$0.10	\$1.90
[REDACTED]	City of Lethbridge - Day Use Zone 10 (6609)	City of Lethbridge	6439 - Daily Rate	Feb 4, 2026, 9:58:12 AM Feb 4, 2026, 2:58:12 PM (5h)	Parking Service fee	\$2.25 \$0.10	\$2.35
[REDACTED]	City of Lethbridge - Zone 03 (6559)	City of Lethbridge	6442 - Daily Rate	Feb 3, 2026, 9:31:23 AM Feb 3, 2026, 11:16:23 AM (1h 45m)	Parking Service fee	\$1.75 \$0.10	\$1.85
[REDACTED]	City of Lethbridge - Day Use Zone 10 (6608)	City of Lethbridge	6439 - Daily Rate	Feb 2, 2026, 1:30:37 PM Feb 2, 2026, 4:00:00 PM (2h 29m)	Parking Service fee	\$1.80 \$0.10	\$1.90
[REDACTED]	City of Lethbridge - Zone 03 (6559)	City of Lethbridge	6442 - Daily Rate	Jan 30, 2026, 11:31:36 AM Jan 30, 2026, 1:01:36 PM (1h 30m)	Parking Service fee	\$1.50 \$0.10	\$1.60
[REDACTED]	City of Lethbridge - Day Use Zone 10 (6608)	City of Lethbridge	6439 - Daily Rate	Jan 29, 2026, 1:57:47 PM Jan 29, 2026, 4:00:00 PM (2h 2m)	Parking Service fee	\$1.80 \$0.10	\$1.90
[REDACTED]	City of Lethbridge - Day Use Zone 10 (6608)	City of Lethbridge	6439 - Daily Rate	Jan 27, 2026, 12:08:42 PM Jan 27, 2026, 4:00:00 PM (3h 51m)	Parking Service fee	\$1.80 \$0.10	\$1.90

flowbird. is a service provided by Flowbird SAS - with capital of 30.382.146 Euros - R.C.S. Nanterre 444 719 272 - 2ter rue du Château 92200 NEUILLY SUR SEINE

Intra-community VAT: FR40444719272

In case of dispute about our parking service, a claim must be sent to the Operator and / or the City in charge of parking management. To support a complaint, the User may use the Ticket History PDF or print a parking session from the flowbird. website.

Page 1/10

I hereby certify that the whole of the expenditure was incurred and that amounts claimed have not previously been paid to me or on my behalf.



Legislative Assembly of Alberta

ME58248 - Members' Other Expenses Claim Form

Receipt Description	Lethbridge Parking January 2025 - February 2026
Member Name	Rob Miyashiro
Claimant	Rob Miyashiro
Expense Category	Member Parking

	City of Lethbridge – Zone 03 (6559)	City of Lethbridge	6442 - Daily Rate	Jan 26, 2026, 12:52:18 PM Jan 26, 2026, 3:52:18 PM (3h)	Parking Service fee	\$3.00 \$0.10	\$3.10
	City of Lethbridge – Zone 03 (6559)	City of Lethbridge	6442 - Daily Rate	Jan 23, 2026, 1:28:22 PM Jan 23, 2026, 4:00:00 PM (2h 31m)	Parking Service fee	\$2.75 \$0.10	\$2.85
	City of Lethbridge – Day Use Zone 10 (6608)	City of Lethbridge	6439 - Daily Rate	Jan 22, 2026, 10:01:40 AM Jan 22, 2026, 4:00:00 PM (5h 58m)	Parking Service fee	\$2.70 \$0.10	\$2.80
	City of Lethbridge – Day Use Zone 10 (6609)	City of Lethbridge	6439 - Daily Rate	Jan 21, 2026, 10:01:54 AM Jan 21, 2026, 2:01:54 PM (4h)	Parking Service fee	\$1.80 \$0.10	\$1.90
	City of Lethbridge – Day Use Zone 10 (6476)	City of Lethbridge	6439 - Daily Rate	Jan 20, 2026, 11:25:48 AM Jan 20, 2026, 3:25:48 PM (4h)	Parking Service fee	\$1.80 \$0.10	\$1.90
	City of Lethbridge – Day Use Zone 10 (6608)	City of Lethbridge	6439 - Daily Rate	Jan 15, 2026, 10:03:23 AM Jan 15, 2026, 2:03:23 PM (4h)	Parking Service fee	\$1.80 \$0.10	\$1.90
	City of Lethbridge – Day Use Zone 10 (6608)	City of Lethbridge	6439 - Daily Rate	Jan 13, 2026, 11:31:39 AM Jan 13, 2026, 3:31:39 PM (4h)	Parking Service fee	\$1.80 \$0.10	\$1.90
	City of Lethbridge – Day Use Zone 10 (6608)	City of Lethbridge	6439 - Daily Rate	Jan 12, 2026, 2:45:51 PM Jan 12, 2026, 4:00:00 PM (1h 14m)	Parking Service fee	\$1.80 \$0.10	\$1.90
	City of Lethbridge – Day Use Zone 10 (6608)	City of Lethbridge	6439 - Daily Rate	Jan 8, 2026, 11:39:39 AM Jan 8, 2026, 3:39:39 PM (4h)	Parking Service fee	\$1.80 \$0.10	\$1.90
	City of Lethbridge – Day Use Zone 10 (6608)	City of Lethbridge	6439 - Daily Rate	Jan 6, 2026, 1:21:41 PM Jan 6, 2026, 4:00:00 PM (2h 38m)	Parking Service fee	\$1.80 \$0.10	\$1.90

f o w b rd. s a s e r v e p r o v d e d b y F o w b r d S A S - w t h c a p t a l o f 30.382.146 E u r o s - R . C . S . N a n t e r r e 4 4 4 7 1 9 2 7 2 - 2 t e r r u e d u C h â t e a u 9 2 2 0 0 N E U I L L Y S U R S E I N E

I n t r a - c o m m u n i t y V A T : F R 4 0 4 4 4 7 1 9 2 7 2

I n c a s e o f d i s p u t e a b o u t o u r p a r k i n g s e r v i c e , a c c o m p l a i n t s m u s t b e s e n t t o t h e O p e r a t o r a n d / o r t h e C i t y i n c h a r g e o f p a r k i n g m a n a g e m e n t . T o s u p p o r t a c o m p l a i n t , t h e U s e r m a y u s e t h e T i c k e t H i s t o r y P D F o r p r i n t a b l e p a r k i n g s e s s o n f r o m t h e f o w b r d . w e b s i t e .

Page 2/10

I hereby certify that the whole of the expenditure was incurred and that amounts claimed have not previously been paid to me or on my behalf.



Legislative Assembly of Alberta

ME58248 - Members' Other Expenses Claim Form

Receipt Description	Lethbridge Parking January 2025 - February 2026
Member Name	Rob Miyashiro
Claimant	Rob Miyashiro
Expense Category	Member Parking

	City of Lethbridge – Day Use Zone 10 (6608)	City of Lethbridge	6439 - Daily Rate	Dec 16, 2025, 12:05:36 PM Dec 16, 2025, 4:00:00 PM (3h 54m)	Parking Service fee	\$1.80 \$0.10	\$1.90
	City of Lethbridge – Zone 03 (6559)	City of Lethbridge	6442 - Daily Rate	Nov 28, 2025, 11:31:04 AM Nov 28, 2025, 12:31:04 PM (1h)	Parking Service fee	\$1.00 \$0.10	\$1.10
	City of Lethbridge – Zone 03 (6543)	City of Lethbridge	6442 - Daily Rate	Nov 10, 2025, 9:55:37 AM Nov 10, 2025, 10:55:37 AM (1h)	Parking Service fee	\$1.00 \$0.10	\$1.10
	City of Lethbridge – Day Use Zone 10 (6608)	City of Lethbridge	6439 - Daily Rate	Nov 7, 2025, 11:50:54 AM Nov 7, 2025, 4:00:00 PM (4h 9m)	Parking Service fee	\$1.92 \$0.20	\$2.12
	City of Lethbridge – Day Use Zone 10 (6608)	City of Lethbridge	6439 - Daily Rate	Oct 16, 2025, 9:30:33 AM Oct 16, 2025, 3:45:33 PM (6h 15m)	Parking Service fee	\$2.82 \$0.10	\$2.92
	City of Lethbridge – Day Use Zone 10 (6609)	City of Lethbridge	6439 - Daily Rate	Oct 15, 2025, 12:27:28 PM Oct 15, 2025, 4:00:00 PM (3h 32m)	Parking Service fee	\$1.80 \$0.10	\$1.90
	City of Lethbridge – Day Use Zone 10 (6608)	City of Lethbridge	6439 - Daily Rate	Oct 10, 2025, 11:34:30 AM Oct 10, 2025, 4:00:00 PM (4h 25m)	Parking Service fee	\$2.03 \$0.10	\$2.13
	City of Lethbridge – Zone 03 (6559)	City of Lethbridge	6442 - Daily Rate	Oct 8, 2025, 11:05:38 AM Oct 8, 2025, 12:05:38 PM (1h)	Parking Service fee	\$1.00 \$0.10	\$1.10
	City of Lethbridge – Day Use Zone 10 (6608)	City of Lethbridge	6439 - Daily Rate	Oct 7, 2025, 1:19:34 PM Oct 7, 2025, 4:00:00 PM (2h 40m)	Parking Service fee	\$1.80 \$0.10	\$1.90
	City of Lethbridge – Day Use Zone 10 (6608)	City of Lethbridge	6439 - Daily Rate	Oct 1, 2025, 11:39:21 AM Oct 1, 2025, 3:39:21 PM (4h)	Parking Service fee	\$1.80 \$0.10	\$1.90

fowbrd. s a serv ce prov ded by Fowbrd SAS - w th cap ta of 30.382.146 Euros - R.C.S. Nanterre 444 719 272 - 2ter rue du Château 92200 NEUILLY SUR SEINE

Intra-community VAT: FR40444719272

In case of dispute about our parking service, a claim must be sent to the Operator and / or the City in charge of parking management. To support a complaint, the User may use the Ticket History PDF or printable parking session from the fowbrd. website.

Page 3/10

I hereby certify that the whole of the expenditure was incurred and that amounts claimed have not previously been paid to me or on my behalf.



Legislative Assembly of Alberta

ME58248 - Members' Other Expenses Claim Form

Receipt Description	Lethbridge Parking January 2025 - February 2026
Member Name	Rob Miyashiro
Claimant	Rob Miyashiro
Expense Category	Member Parking

	City of Lethbridge – Day Use Zone 10 (6609)	City of Lethbridge	6439 - Daily Rate	Sep 26, 2025, 12:26:52 PM Sep 26, 2025, 4:00:00 PM (3h 33m)	Parking Service fee	\$1.80 \$0.10	\$1.90
	City of Lethbridge – Day Use Zone 10 (6609)	City of Lethbridge	6439 - Daily Rate	Sep 24, 2025, 2:38:08 PM Sep 24, 2025, 4:00:00 PM (1h 21m)	Parking Service fee	\$1.80 \$0.10	\$1.90
	City of Lethbridge – Day Use Zone 10 (6609)	City of Lethbridge	6439 - Daily Rate	Sep 19, 2025, 9:03:39 AM Sep 19, 2025, 1:03:39 PM (4h)	Parking Service fee	\$1.80 \$0.10	\$1.90
	City of Lethbridge – Zone 03 (6496)	City of Lethbridge	6442 - Daily Rate	Sep 17, 2025, 11:21:53 AM Sep 17, 2025, 12:21:53 PM (1h)	Parking Service fee	\$1.00 \$0.10	\$1.10
	City of Lethbridge – Zone 03 (6533)	City of Lethbridge	6442 - Daily Rate	Sep 12, 2025, 11:13:16 AM Sep 12, 2025, 12:43:16 PM (1h 30m)	Parking Service fee	\$1.50 \$0.10	\$1.60
	City of Lethbridge – Day Use Zone 10 (6609)	City of Lethbridge	6439 - Daily Rate	Sep 11, 2025, 12:58:47 PM Sep 11, 2025, 4:00:00 PM (3h 1m)	Parking Service fee	\$1.80 \$0.10	\$1.90
	City of Lethbridge – Zone 03 (6550)	City of Lethbridge	6442 - Daily Rate	Sep 11, 2025, 10:48:40 AM Sep 11, 2025, 1:18:40 PM (2h 30m)	Parking Service fee	\$2.50 \$0.20	\$2.70
	City of Lethbridge – Day Use Zone 10 (6608)	City of Lethbridge	6439 - Daily Rate	Sep 10, 2025, 12:28:09 PM Sep 10, 2025, 4:00:00 PM (3h 31m)	Parking Service fee	\$1.80 \$0.10	\$1.90
	City of Lethbridge – Day Use Zone 10 (6609)	City of Lethbridge	6439 - Daily Rate	Sep 5, 2025, 11:32:40 AM Sep 5, 2025, 3:32:40 PM (4h)	Parking Service fee	\$1.80 \$0.10	\$1.90
	City of Lethbridge – Day Use Zone 10 (6608)	City of Lethbridge	6439 - Daily Rate	Sep 3, 2025, 11:30:51 AM Sep 3, 2025, 3:30:51 PM (4h)	Parking Service fee	\$1.80 \$0.10	\$1.90

fowbrd. s a servce provded by Fowbrd SAS - w th cap ta of 30.382.146 Euros - R.C.S. Nanterre 444 719 272 - 2ter rue du Château 92200 NEUILLY SUR SEINE

Intra-community VAT: FR40444719272

In case of dispute about our parking service, a claims must be sent to the Operator and / or the City in charge of parking management. To support a complaint, the User may use the Ticket History PDF or printable parking session from the fowbrd. website.

Page 4/10

I hereby certify that the whole of the expenditure was incurred and that amounts claimed have not previously been paid to me or on my behalf.



Legislative Assembly of Alberta

ME58248 - Members' Other Expenses Claim Form

Receipt Description	Lethbridge Parking January 2025 - February 2026
Member Name	Rob Miyashiro
Claimant	Rob Miyashiro
Expense Category	Member Parking

	City of Lethbridge – Day Use Zone 10 (6609)	City of Lethbridge	6439 - Daily Rate	Sep 2, 2025, 12:40:08 PM Sep 2, 2025, 4:00:00 PM (3h 19m)	Parking Service fee	\$1.80 \$0.10	\$1.90
	City of Lethbridge – Day Use Zone 10 (6609)	City of Lethbridge	6439 - Daily Rate	Aug 29, 2025, 1:39:57 PM Aug 29, 2025, 4:00:00 PM (2h 20m)	Parking Service fee	\$1.80 \$0.10	\$1.90
	City of Lethbridge – Day Use Zone 10 (6609)	City of Lethbridge	6439 - Daily Rate	Aug 22, 2025, 9:33:20 AM Aug 22, 2025, 3:18:20 PM (5h 45m)	Parking Service fee	\$2.59 \$0.10	\$2.69
	City of Lethbridge – Day Use Zone 10 (6609)	City of Lethbridge	6439 - Daily Rate	Aug 21, 2025, 1:58:14 PM Aug 21, 2025, 4:00:00 PM (2h 1m)	Parking Service fee	\$1.80 \$0.10	\$1.90
	City of Lethbridge – Zone 03 (6560)	City of Lethbridge	6442 - Daily Rate	Aug 21, 2025, 10:29:16 AM Aug 21, 2025, 11:29:16 AM (1h)	Parking Service fee	\$1.00 \$0.10	\$1.10
	City of Lethbridge – Day Use Zone 10 (6609)	City of Lethbridge	6439 - Daily Rate	Aug 20, 2025, 10:26:30 AM Aug 20, 2025, 4:00:00 PM (5h 33m)	Parking Service fee	\$2.59 \$0.10	\$2.69
	City of Lethbridge – Day Use Zone 10 (6445)	City of Lethbridge	6439 - Daily Rate	Aug 19, 2025, 7:59:24 AM Aug 19, 2025, 2:00:00 PM (6h)	Parking Service fee	\$2.25 \$0.10	\$2.35
	City of Lethbridge – Day Use Zone 10 (6609)	City of Lethbridge	6439 - Daily Rate	Aug 18, 2025, 1:38:44 PM Aug 18, 2025, 4:00:00 PM (2h 21m)	Parking Service fee	\$1.80 \$0.10	\$1.90
	City of Lethbridge – Day Use Zone 10 (6608)	City of Lethbridge	6439 - Daily Rate	Aug 14, 2025, 11:35:43 AM Aug 14, 2025, 4:00:00 PM (4h 24m)	Parking Service fee	\$2.03 \$0.10	\$2.13
	City of Lethbridge – Day Use Zone 10 (6608)	City of Lethbridge	6439 - Daily Rate	Aug 8, 2025, 10:04:08 AM Aug 8, 2025, 3:04:08 PM (5h)	Parking Service fee	\$2.25 \$0.10	\$2.35

fowbrd. s a serv ce prov ded by Fowbrd SAS - w th cap ta of 30.382.146 Euros - R.C.S. Nanterre 444 719 272 - 2ter rue du Château 92200 NEUILLY SUR SEINE

Intra-community VAT: FR40444719272

In case of dispute about our parking service, a claims must be sent to the Operator and / or the City in charge of parking management. To support a complaint, the User may use the Ticket History PDF or printable parking session from the fowbrd. website.

I hereby certify that the whole of the expenditure was incurred and that amounts claimed have not previously been paid to me or on my behalf.



Legislative Assembly of Alberta

ME58248 - Members' Other Expenses Claim Form

Receipt Description	Lethbridge Parking January 2025 - February 2026
Member Name	Rob Miyashiro
Claimant	Rob Miyashiro
Expense Category	Member Parking

	City of Lethbridge – Day Use Zone 10 (6609)	City of Lethbridge	6439 - Daily Rate	Aug 7, 2025, 11:35:11 AM Aug 7, 2025, 3:35:11 PM (4h)	Parking Service fee	\$1.80 \$0.10	\$1.90
	City of Lethbridge – Day Use Zone 10 (6609)	City of Lethbridge	6439 - Daily Rate	Aug 6, 2025, 11:08:00 AM Aug 6, 2025, 3:23:00 PM (4h 15m)	Parking Service fee	\$1.92 \$0.10	\$2.02
	City of Lethbridge – Day Use Zone 10 (6609)	City of Lethbridge	6439 - Daily Rate	Aug 5, 2025, 1:11:25 PM Aug 5, 2025, 4:00:00 PM (2h 48m)	Parking Service fee	\$1.80 \$0.10	\$1.90
	City of Lethbridge – Day Use Zone 10 (6609)	City of Lethbridge	6439 - Daily Rate	Jul 29, 2025, 12:56:04 PM Jul 29, 2025, 4:00:00 PM (3h 3m)	Parking Service fee	\$1.80 \$0.10	\$1.90
	City of Lethbridge – Day Use Zone 10 (6608)	City of Lethbridge	6439 - Daily Rate	Jul 28, 2025, 12:11:43 PM Jul 28, 2025, 4:00:00 PM (3h 48m)	Parking Service fee	\$1.80 \$0.10	\$1.90
	City of Lethbridge – Day Use Zone 10 (6609)	City of Lethbridge	6439 - Daily Rate	Jul 11, 2025, 11:28:34 AM Jul 11, 2025, 3:28:34 PM (4h)	Parking Service fee	\$1.80 \$0.10	\$1.90
	City of Lethbridge – Day Use Zone 10 (6608)	City of Lethbridge	6439 - Daily Rate	Jul 10, 2025, 10:40:44 AM Jul 10, 2025, 2:55:44 PM (4h 15m)	Parking Service fee	\$1.92 \$0.10	\$2.02
	City of Lethbridge – Day Use Zone 10 (6609)	City of Lethbridge	6439 - Daily Rate	Jul 9, 2025, 11:03:23 AM Jul 9, 2025, 3:18:23 PM (4h 15m)	Parking Service fee	\$1.92 \$0.10	\$2.02
	City of Lethbridge – Day Use Zone 10 (6609)	City of Lethbridge	6439 - Daily Rate	Jul 8, 2025, 10:56:32 AM Jul 8, 2025, 3:11:32 PM (4h 15m)	Parking Service fee	\$1.92 \$0.10	\$2.02
	City of Lethbridge – Zone 03 (6560)	City of Lethbridge	6442 - Daily Rate	Jul 4, 2025, 10:53:39 AM Jul 4, 2025, 1:53:39 PM (3h)	Parking Service fee	\$3.00 \$0.10	\$3.10

fowbrd. s a servce provded by Fowbrd SAS - w th cap ta of 30.382.146 Euros - R.C.S. Nanterre 444 719 272 - 2ter rue du Château 92200 NEUILLY SUR SEINE

Intra-community VAT: FR40444719272

In case of dispute about our parking service, a claims must be sent to the Operator and / or the City in charge of parking management. To support a complaint, the User may use the Ticket History PDF or print the parking session from the fowbrd. website.

I hereby certify that the whole of the expenditure was incurred and that amounts claimed have not previously been paid to me or on my behalf.



Legislative Assembly of Alberta

ME58248 - Members' Other Expenses Claim Form

Receipt Description	Lethbridge Parking January 2025 - February 2026
Member Name	Rob Miyashiro
Claimant	Rob Miyashiro
Expense Category	Member Parking

	City of Lethbridge – Day Use Zone 10 (6609)	City of Lethbridge	6439 - Daily Rate	Jul 3, 2025, 3:15:08 PM Jul 3, 2025, 4:00:00 PM (44m)	Parking Service fee	\$1.80 \$0.10	\$1.90
	City of Lethbridge – Day Use Zone 10 (6609)	City of Lethbridge	6439 - Daily Rate	Jul 2, 2025, 12:12:21 PM Jul 2, 2025, 4:00:00 PM (3h 47m)	Parking Service fee	\$1.80 \$0.10	\$1.90
	City of Lethbridge – Zone 03 (6559)	City of Lethbridge	6442 - Daily Rate	Jun 26, 2025, 3:33:41 PM Jun 26, 2025, 4:00:00 PM (26m)	Parking Service fee	\$1.00 \$0.10	\$1.10
	City of Lethbridge – Day Use Zone 10 (6609)	City of Lethbridge	6439 - Daily Rate	Jun 25, 2025, 11:07:04 AM Jun 26, 2025, 12:00:00 AM (12h 52m)			\$0.00
	City of Lethbridge – Day Use Zone 10 (6609)	City of Lethbridge	6439 - Daily Rate	Jun 23, 2025, 11:53:54 AM Jun 23, 2025, 3:53:54 PM (4h)	Parking Service fee	\$1.80 \$0.10	\$1.90
	City of Lethbridge – Day Use Zone 10 (6609)	City of Lethbridge	6439 - Daily Rate	Jun 19, 2025, 11:08:39 AM Jun 19, 2025, 3:08:39 PM (4h)	Parking Service fee	\$1.80 \$0.10	\$1.90
	City of Lethbridge – Day Use Zone 10 (6609)	City of Lethbridge	6439 - Daily Rate	Jun 18, 2025, 1:00:16 PM Jun 18, 2025, 4:00:00 PM (2h 59m)	Parking Service fee	\$1.80 \$0.10	\$1.90
	City of Lethbridge – Day Use Zone 10 (6476)	City of Lethbridge	6439 - Daily Rate	Jun 17, 2025, 1:06:18 PM Jun 17, 2025, 4:00:00 PM (2h 53m)	Parking Service fee	\$1.80 \$0.10	\$1.90
	City of Lethbridge – Day Use Zone 10 (6609)	City of Lethbridge	6439 - Daily Rate	Jun 9, 2025, 12:37:11 PM Jun 9, 2025, 4:00:00 PM (3h 22m)	Parking Service fee	\$1.80 \$0.10	\$1.90
	City of Lethbridge – Day Use Zone 10 (6476)	City of Lethbridge	6439 - Daily Rate	Jun 4, 2025, 2:03:30 PM Jun 4, 2025, 4:00:00 PM (1h 56m)	Parking Service fee	\$1.80 \$0.10	\$1.90

fowbrd. s a serv ce prov ded by Fowbrd SAS - w th cap ta of 30.382.146 Euros - R.C.S. Nanterre 444 719 272 - 2ter rue du Château 92200 NEUILLY SUR SEINE

Intra-community VAT: FR40444719272

In case of dispute about our parking service, a claims must be sent to the Operator and / or the City in charge of parking management. To support a complaint, the User may use the Ticket History PDF or print a parking session from the fowbrd. website.

Page 7/10

I hereby certify that the whole of the expenditure was incurred and that amounts claimed have not previously been paid to me or on my behalf.



Legislative Assembly of Alberta

ME58248 - Members' Other Expenses Claim Form

Receipt Description	Lethbridge Parking January 2025 - February 2026
Member Name	Rob Miyashiro
Claimant	Rob Miyashiro
Expense Category	Member Parking

	City of Lethbridge – Day Use Zone 10 (6476)	City of Lethbridge	6439 - Daily Rate	Jun 3, 2025, 11:20:23 AM Jun 3, 2025, 4:00:00 PM (4h 39m)	Parking Service fee	\$2.14 \$0.10	\$2.24
	City of Lethbridge – Day Use Zone 10 (6609)	City of Lethbridge	6439 - Daily Rate	Jun 2, 2025, 11:39:12 AM Jun 2, 2025, 4:00:00 PM (4h 20m)	Parking Service fee	\$2.03 \$0.10	\$2.13
	City of Lethbridge – Day Use Zone 10 (6608)	City of Lethbridge	6439 - Daily Rate	May 29, 2025, 11:20:48 AM May 29, 2025, 3:20:48 PM (4h)	Parking Service fee	\$1.80 \$0.10	\$1.90
	City of Lethbridge – Day Use Zone 10 (6608)	City of Lethbridge	6439 - Daily Rate	May 28, 2025, 10:41:35 AM May 29, 2025, 12:00:00 AM (13h 18m)			\$0.00
	City of Lethbridge – Day Use Zone 10 (6608)	City of Lethbridge	6439 - Daily Rate	May 27, 2025, 10:54:17 AM May 27, 2025, 4:00:00 PM (5h 5m)	Parking Service fee	\$2.37 \$0.10	\$2.47
	City of Lethbridge – Day Use Zone 10 (6608)	City of Lethbridge	6439 - Daily Rate	May 26, 2025, 10:07:26 AM May 26, 2025, 4:00:00 PM (5h 52m)	Parking Service fee	\$2.70 \$0.10	\$2.80
	City of Lethbridge – Day Use Zone 10 (6608)	City of Lethbridge	6439 - Daily Rate	May 16, 2025, 11:26:40 AM May 16, 2025, 3:41:40 PM (4h 15m)	Parking Service fee	\$1.92 \$0.10	\$2.02
	City of Lethbridge – Day Use Zone 10 (6608)	City of Lethbridge	6439 - Daily Rate	Apr 25, 2025, 10:37:19 AM Apr 25, 2025, 4:00:00 PM (5h 22m)	Parking Service fee	\$2.48 \$0.10	\$2.58
	City of Lethbridge – Day Use Zone 10 (6609)	City of Lethbridge	6439 - Daily Rate	Apr 24, 2025, 11:08:20 AM Apr 24, 2025, 3:23:20 PM (4h 15m)	Parking Service fee	\$1.92 \$0.10	\$2.02
	City of Lethbridge – Day Use Zone 10 (6608)	City of Lethbridge	6439 - Daily Rate	Apr 22, 2025, 12:10:27 PM Apr 22, 2025, 4:00:00 PM (3h 49m)	Parking Service fee	\$1.80 \$0.10	\$1.90

fowbrd. s a serv ce prov ded by Fowbrd SAS - w th cap ta of 30.382.146 Euros - R.C.S. Nanterre 444 719 272 - 2ter rue du Château 92200 NEUILLY SUR SEINE

Intra-community VAT: FR40444719272

In case of dispute about our parking service, a claims must be sent to the Operator and / or the City in charge of parking management. To support a complaint, the User may use the Ticket History PDF or printable parking session from the fowbrd. website.

Page 8/10

I hereby certify that the whole of the expenditure was incurred and that amounts claimed have not previously been paid to me or on my behalf.



Legislative Assembly of Alberta

ME58248 - Members' Other Expenses Claim Form

Receipt Description	Lethbridge Parking January 2025 - February 2026
Member Name	Rob Miyashiro
Claimant	Rob Miyashiro
Expense Category	Member Parking

	City of Lethbridge – Zone 03 (6559)	City of Lethbridge	6442 - Daily Rate	Apr 22, 2025, 9:56:24 AM Apr 22, 2025, 10:56:24 AM (1h)	Parking Service fee	\$1.00 \$0.10	\$1.10
	City of Lethbridge – Zone 03 (6596)	City of Lethbridge	6442 - Daily Rate	Apr 11, 2025, 3:26:58 PM Apr 11, 2025, 4:00:00 PM (33m)	Parking Service fee	\$1.00 \$0.10	\$1.10
	City of Lethbridge – Zone 03 (6559)	City of Lethbridge	6442 - Daily Rate	Mar 28, 2025, 11:04:46 AM Mar 28, 2025, 2:04:46 PM (3h)	Parking Service fee	\$3.00 \$0.10	\$3.10
	City of Lethbridge – Day Use Zone 10 (6608)	City of Lethbridge	6439 - Daily Rate	Mar 14, 2025, 11:50:45 AM Mar 14, 2025, 3:50:45 PM (4h)	Parking Service fee	\$1.80 \$0.10	\$1.90
	City of Lethbridge – Day Use Zone 10 (6608)	City of Lethbridge	6439 - Daily Rate	Mar 6, 2025, 11:45:14 AM Mar 6, 2025, 3:45:14 PM (4h)	Parking Service fee	\$1.80 \$0.10	\$1.90
	City of Lethbridge – Day Use Zone 10 (6609)	City of Lethbridge	6439 - Daily Rate	Mar 5, 2025, 1:03:47 PM Mar 5, 2025, 4:00:00 PM (2h 56m)	Parking Service fee	\$1.80 \$0.10	\$1.90
	City of Lethbridge – Day Use Zone 10 (6609)	City of Lethbridge	6439 - Daily Rate	Mar 4, 2025, 12:01:22 PM Mar 4, 2025, 4:00:00 PM (3h 58m)	Parking Service fee	\$1.80 \$0.10	\$1.90
	City of Lethbridge – Zone 03 (6559)	City of Lethbridge	6442 - Daily Rate	Mar 3, 2025, 10:01:19 AM Mar 3, 2025, 1:01:19 PM (3h)	Parking Service fee	\$3.00 \$0.10	\$3.10
	ENMAX - Event (6618)	City of Lethbridge	6618 - Daily Rate	Feb 22, 2025, 6:23:59 PM Feb 23, 2025, 12:00:00 AM (5h 36m)	Parking Service fee	\$4.90 \$0.10	\$5.00
	City of Lethbridge – Zone 03 (6559)	City of Lethbridge	6442 - Daily Rate	Feb 20, 2025, 10:48:28 AM Feb 20, 2025, 1:48:28 PM (3h)	Parking Service fee	\$3.00 \$0.10	\$3.10

f o w b rd. s a s e r v e p r o v d e d b y F o w b r d S A S - w t h c a p t a o f 30.382.146 Euros - R.C.S. Nanterre 444 719 272 - 2ter rue du Château 92200 NEUILLY SUR SEINE

Intra-community VAT: FR40444719272

In case of dispute about our parking service, a claim must be sent to the Operator and / or the City in charge of parking management. To support a complaint, the User may use the Ticket History PDF or print a parking session from the fowbrd website.

I hereby certify that the whole of the expenditure was incurred and that amounts claimed have not previously been paid to me or on my behalf.



Legislative Assembly of Alberta

ME58248 - Members' Other Expenses Claim Form

Receipt Description	Lethbridge Parking January 2025 - February 2026
Member Name	Rob Miyashiro
Claimant	Rob Miyashiro
Expense Category	Member Parking

	City of Lethbridge – Zone 03 (6559)	City of Lethbridge	6442 - Daily Rate	Feb 14, 2025, 1:53:09 PM Feb 14, 2025, 3:08:09 PM (1h 15m)	Parking Service fee	\$1.25 \$0.10	\$1.35
	City of Lethbridge – Zone 03 (6559)	City of Lethbridge	6442 - Daily Rate	Feb 13, 2025, 1:04:28 PM Feb 13, 2025, 3:19:28 PM (2h 15m)	Parking Service fee	\$2.25 \$0.10	\$2.35
	City of Lethbridge – Zone 03 (6559)	City of Lethbridge	6442 - Daily Rate	Feb 12, 2025, 2:43:33 PM Feb 12, 2025, 4:00:00 PM (1h 16m)	Parking Service fee	\$1.50 \$0.10	\$1.60
	City of Lethbridge – Zone 03 (6559)	City of Lethbridge	6442 - Daily Rate	Feb 12, 2025, 10:07:08 AM Feb 12, 2025, 11:37:08 AM (1h 30m)	Parking Service fee	\$1.50 \$0.10	\$1.60
	City of Lethbridge – Zone 03 (6559)	City of Lethbridge	6442 - Daily Rate	Feb 11, 2025, 10:03:13 AM Feb 11, 2025, 12:03:13 PM (2h)	Parking Service fee	\$2.00 \$0.10	\$2.10
	City of Lethbridge – Zone 03 (6559)	City of Lethbridge	6442 - Daily Rate	Feb 10, 2025, 10:09:54 AM Feb 10, 2025, 12:09:54 PM (2h)	Parking Service fee	\$2.00 \$0.20	\$2.20
	City of Lethbridge – Zone 03 (6558)	City of Lethbridge	6442 - Daily Rate	Feb 3, 2025, 10:03:47 AM Feb 3, 2025, 1:03:47 PM (3h)	Parking Service fee	\$3.00 \$0.10	\$3.10
	City of Lethbridge – Zone 03 (6559)	City of Lethbridge	6442 - Daily Rate	Jan 28, 2025, 2:51:08 PM Jan 28, 2025, 3:51:08 PM (1h)	Parking Service fee	\$1.00 \$0.10	\$1.10
Total amount							\$189.67

fowbrd. s a servce provded by Fowbrd SAS - w th cap ta of 30.382.146 Euros - R.C.S. Nanterre 444 719 272 - 2ter rue du Château 92200 NEUILLY SUR SEINE

Intra-communty VAT: FR40444719272

In case of d spute about our park ng serv ce, a c a ms must be sent to the Operator and / or the City n charge of park ng management. To support a comp a nt, the User may use the T cket H story PDF or pr ntab e park ng sess on from the fowbrd. webs te.

Page 10/10

I hereby certify that the whole of the expenditure was incurred and that amounts claimed have not previously been paid to me or on my behalf.



Legislative Assembly of Alberta

MP57734 - Members' Travel Expense Per-Diems Expense Claim Form

Form Type	Members' Travel Expenses Per-Diems Claim
Form ID	MP57734
Description	December 2025 - Per-Diems
Claimant	Rob Miyashiro
Employee Number	[REDACTED]
Constituency	Lethbridge-West 72 (Rob Miyashiro)
Date Submitted	January 4, 2026
Date Received	January 5, 2026
Mailing Address	[REDACTED]

B = Breakfast | L = Lunch | D = Dinner

ID	Date	Reason for Travel	Meal Purchase Location(s)	B	L	D	Subtotal	G.S.T.	Total
20796	Dec 1, 2025	60 km from Perm. Res.	Edmonton	X	X		29.52	1.48	31.00
20797	Dec 2, 2025	60 km from Perm. Res.	Edmonton	X	X	X	56.19	2.81	59.00
20798	Dec 3, 2025	60 km from Perm. Res.	Edmonton	X	X	X	56.19	2.81	59.00
20799	Dec 4, 2025	Travel to/from Capital	Edmonton, Aldersyde	X	X	X	56.19	2.81	59.00
							198.09	9.91	208.00

This Claim Form has been certified by the Member to have met the requirements of section 7 of the Members' Allowances Order, RMSC 1992, c. M-1, as amended, have incurred meal expenses on the dates selected, and have not previously claimed or been paid for these expenses.



Legislative Assembly of Alberta

MP57970 - Members' Travel Expense Per-Diems Expense Claim Form

Form Type	Members' Travel Expenses Per-Diems Claim
Form ID	MP57970
Description	January 2026 - Per-Diems
Claimant	Rob Miyashiro
Employee Number	[REDACTED]
Constituency	Lethbridge-West 72 (Rob Miyashiro)
Date Submitted	February 1, 2026
Date Received	February 2, 2026
Mailing Address	[REDACTED]

B = Breakfast | L = Lunch | D = Dinner

ID	Date	Reason for Travel	Meal Purchase Location(s)	B	L	D	Subtotal	G.S.T.	Total
21062	Jan 14, 2026	60 km from Perm. Res.	Vulcan		X		17.14	0.86	18.00
							17.14	0.86	18.00

This Claim Form has been certified by the Member to have met the requirements of section 7 of the Members' Allowances Order, RMSC 1992, c. M-1, as amended, have incurred meal expenses on the dates selected, and have not previously claimed or been paid for these expenses.



Legislative Assembly of Alberta

MP58643 - Members' Travel Expense Per-Diems Expense Claim Form

Form Type	Members' Travel Expenses Per-Diems Claim
Form ID	MP58643
Description	February 2026 - Per-Diems
Claimant	Rob Miyashiro
Employee Number	██████████
Constituency	Lethbridge-West 72 (Rob Miyashiro)
Date Submitted	March 3, 2026
Date Received	March 4, 2026
Mailing Address	██

B = Breakfast | L = Lunch | D = Dinner

ID	Date	Reason for Travel	Meal Purchase Location(s)	B	L	D	Subtotal	G.S.T.	Total
21498	Feb 10, 2026	60 km from Perm. Res.	Calgary - Caucus meeting	X			12.38	0.62	13.00
21499	Feb 11, 2026	60 km from Perm. Res.	Calgary - Caucus meeting			X	26.67	1.33	28.00
21500	Feb 23, 2026	Travel to/from Capital	Edmonton, Red Deer		X	X	43.81	2.19	46.00
21501	Feb 24, 2026	60 km from Perm. Res.	Edmonton	X	X	X	56.19	2.81	59.00
21502	Feb 25, 2026	60 km from Perm. Res.	Edmonton	X	X	X	56.19	2.81	59.00
21503	Feb 26, 2026	Travel to/from Capital	Edmonton, Aldersyde	X	X	X	56.19	2.81	59.00
							251.43	12.57	264.00

This Claim Form has been certified by the Member to have met the requirements of section 7 of the Members' Allowances Order, RMSC 1992, c. M-1, as amended, have incurred meal expenses on the dates selected, and have not previously claimed or been paid for these expenses.



Legislative Assembly of Alberta

MP59555 - Members' Travel Expense Per-Diems Expense Claim Form

Form Type	Members' Travel Expenses Per-Diems Claim
Form ID	MP59555
Description	March 2026 - Per-Diems
Claimant	Rob Miyashiro
Employee Number	██████████
Constituency	Lethbridge-West 72 (Rob Miyashiro)
Date Submitted	March 31, 2026
Date Received	April 1, 2026
Mailing Address	██

B = Breakfast | L = Lunch | D = Dinner

ID	Date	Reason for Travel	Meal Purchase Location(s)	B	L	D	Subtotal	G.S.T.	Total
22747	Mar 8, 2026	Travel to/from Capital	Red Deer			X	26.67	1.33	28.00
22748	Mar 9, 2026	60 km from Perm. Res.	Edmonton	X	X	X	56.19	2.81	59.00
22749	Mar 10, 2026	60 km from Perm. Res.	Edmonton	X	X		29.52	1.48	31.00
22750	Mar 11, 2026	60 km from Perm. Res.	Edmonton	X		X	39.05	1.95	41.00
22751	Mar 12, 2026	Travel to/from Capital	Edmonton	X	X	X	56.19	2.81	59.00
22752	Mar 15, 2026	Travel to/from Capital	Red Deer			X	26.67	1.33	28.00
22753	Mar 16, 2026	60 km from Perm. Res.	Edmonton	X	X		29.52	1.48	31.00
22754	Mar 17, 2026	60 km from Perm. Res.	Edmonton	X	X	X	56.19	2.81	59.00
22755	Mar 18, 2026	60 km from Perm. Res.	Edmonton	X		X	39.05	1.95	41.00
22756	Mar 19, 2026	60 km from Perm. Res.	Edmonton, Red Deer	X		X	39.05	1.95	41.00
22757	Mar 22, 2026	Travel to/from Capital	Red Deer			X	26.67	1.33	28.00
22758	Mar 23, 2026	60 km from Perm. Res.	Edmonton	X	X		29.52	1.48	31.00
22759	Mar 24, 2026	60 km from Perm. Res.	Edmonton	X	X	X	56.19	2.81	59.00
22760	Mar 25, 2026	60 km from Perm. Res.	Edmonton	X	X		29.52	1.48	31.00
22761	Mar 26, 2026	60 km from Perm. Res.	Edmonton	X			12.38	0.62	13.00
22762	Mar 27, 2026	60 km from Perm. Res.	Edmonton	X	X		29.52	1.48	31.00
22763	Mar 30, 2026	60 km from Perm. Res.	Edmonton	X	X		29.52	1.48	31.00
22764	Mar 31, 2026	60 km from Perm. Res.	Edmonton	X	X		29.52	1.48	31.00
							640.94	32.06	673.00

This Claim Form has been certified by the Member to have met the requirements of section 7 of the Members' Allowances Order, RMSC 1992, c. M-1, as amended, have incurred meal expenses on the dates selected, and have not previously claimed or been paid for these expenses.



Legislative Assembly of Alberta

MR57732 - Members' Temporary Accommodation Allowance Claim Form

Form Type	Members' Temporary Accommodation Allowance Claim
Form ID	MR57732
Description	Temporary Accommodation - January 2026
Claimant	Rob Miyashiro
Employee Number	[REDACTED]
Constituency	Lethbridge-West 72 (Rob Miyashiro)
Date Submitted	January 4, 2026
Date Received	January 5, 2026
Mailing Address	[REDACTED]

Month	Year	Monthly Claim Amount
January	2026	2200.00
	Grand Total	2200.00

Office Use Only	[REDACTED]
-----------------	------------

I confirm that I have completed declarations evidencing: (1) my current permanent residence and (2) my current temporary residence, with supporting documentation as required, and have either provided these documents to Financial Management.

Pursuant to section 6.1 of the Members' Allowance Order [Short-term Rental of Temporary Residence], I confirm that I have not, during the period for which the allowance is claimed, used any commercial service through which I, or a third party on my behalf, has rented out my temporary residence for a fee as a vacation rental or any other type of short-term accommodation.

I confirm that the amount being claimed does not exceed my costs of maintaining the temporary residence and acknowledge that I will be personally responsible for reimbursing the Legislative Assembly Office for any payment received that exceeds this amount.

I certify that I have met the requirements of the Members' Allowances Order, RMSC 1992, c. M-1, as amended, have incurred accommodation expenses on the dates or months selected, and have not previously claimed or been paid for these expenses.



Legislative Assembly of Alberta

MR58087 - Members' Temporary Accommodation Allowance Claim Form

Form Type	Members' Temporary Accommodation Allowance Claim
Form ID	MR58087
Description	Temporary Accommodation - February 2026
Claimant	Rob Miyashiro
Employee Number	[REDACTED]
Constituency	Lethbridge-West 72 (Rob Miyashiro)
Date Submitted	February 1, 2026
Date Received	February 2, 2026
Mailing Address	[REDACTED]

Month	Year	Monthly Claim Amount
February	2026	2200.00
	Grand Total	2200.00

Office Use Only	[REDACTED]
-----------------	------------

I confirm that I have completed declarations evidencing: (1) my current permanent residence and (2) my current temporary residence, with supporting documentation as required, and have either provided these documents to Financial Management.

Pursuant to section 6.1 of the Members' Allowance Order [Short-term Rental of Temporary Residence], I confirm that I have not, during the period for which the allowance is claimed, used any commercial service through which I, or a third party on my behalf, has rented out my temporary residence for a fee as a vacation rental or any other type of short-term accommodation.

I confirm that the amount being claimed does not exceed my costs of maintaining the temporary residence and acknowledge that I will be personally responsible for reimbursing the Legislative Assembly Office for any payment received that exceeds this amount.

I certify that I have met the requirements of the Members' Allowances Order, RMSC 1992, c. M-1, as amended, have incurred accommodation expenses on the dates or months selected, and have not previously claimed or been paid for these expenses.



Legislative Assembly of Alberta

MR58640 - Members' Temporary Accommodation Allowance Claim Form

Form Type	Members' Temporary Accommodation Allowance Claim
Form ID	MR58640
Description	Temporary Accommodation - March 2026
Claimant	Rob Miyashiro
Employee Number	[REDACTED]
Constituency	Lethbridge-West 72 (Rob Miyashiro)
Date Submitted	March 3, 2026
Date Received	March 4, 2026
Mailing Address	[REDACTED]

Month	Year	Monthly Claim Amount
March	2026	2200.00
	Grand Total	2200.00

Office Use Only	[REDACTED]
-----------------	------------

I confirm that I have completed declarations evidencing: (1) my current permanent residence and (2) my current temporary residence, with supporting documentation as required, and have either provided these documents to Financial Management.

Pursuant to section 6.1 of the Members' Allowance Order [Short-term Rental of Temporary Residence], I confirm that I have not, during the period for which the allowance is claimed, used any commercial service through which I, or a third party on my behalf, has rented out my temporary residence for a fee as a vacation rental or any other type of short-term accommodation.

I confirm that the amount being claimed does not exceed my costs of maintaining the temporary residence and acknowledge that I will be personally responsible for reimbursing the Legislative Assembly Office for any payment received that exceeds this amount.

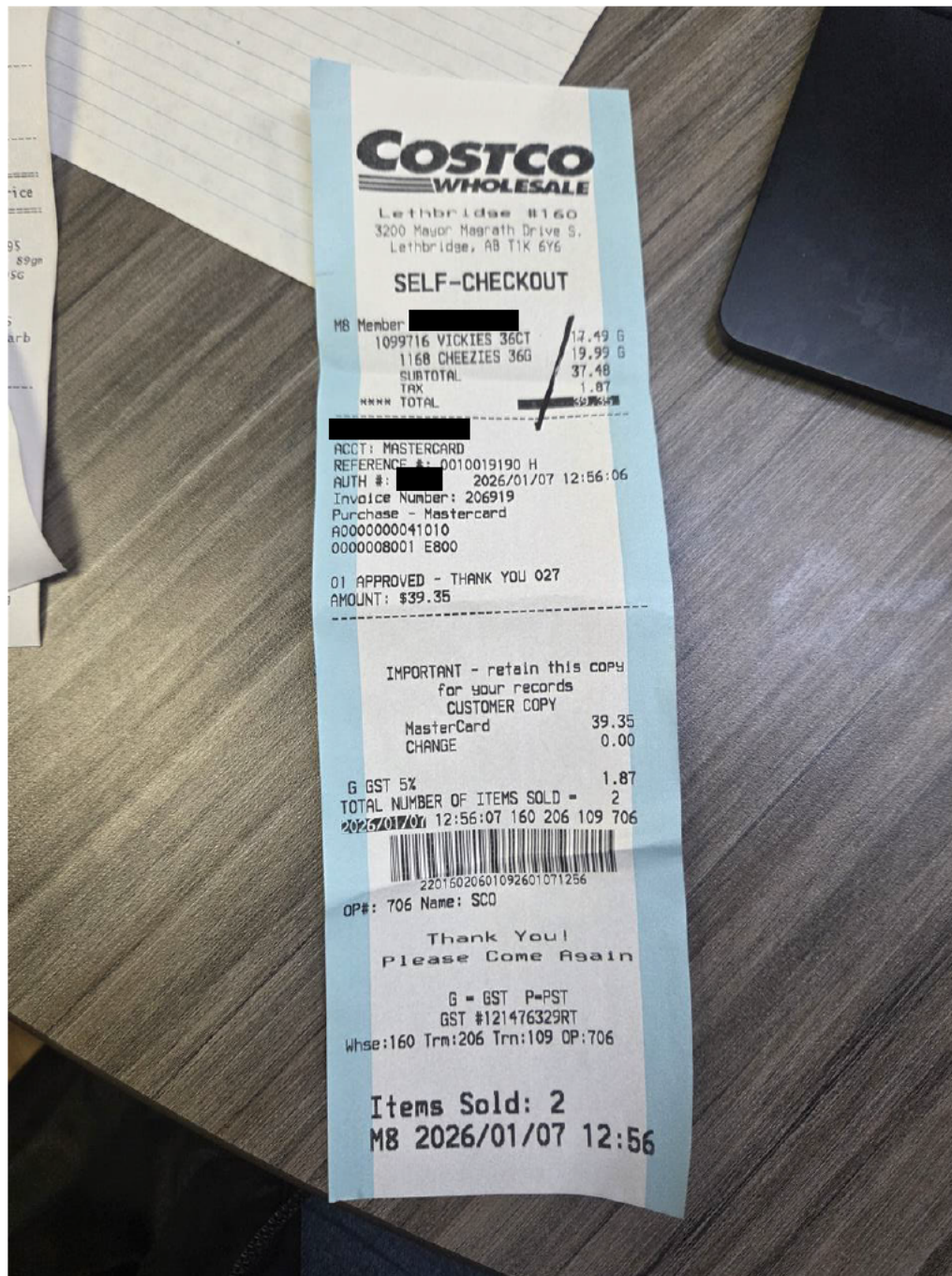
I certify that I have met the requirements of the Members' Allowances Order, RMSC 1992, c. M-1, as amended, have incurred accommodation expenses on the dates or months selected, and have not previously claimed or been paid for these expenses.



Legislative Assembly of Alberta
SE57827 - Staff Other Expenses Claim Form

Hosting: \$37.48 + GST

Receipt Description	Costco chips for January 10 2026 MLA event
Member Name	Rob Miyashiro
Claimant	Anastasia Sereda
Expense Category	Hosting - Group (Lethbridge-West constituents) Hosting Purpose - MLA open house



I hereby certify that the whole of the expenditure was incurred and that amounts claimed have not previously been paid to my staff or on their behalf.



Legislative Assembly of Alberta
ME57971 - Members' Other Expenses Claim Form

Hosting: \$111.32 + GST

Receipt Description	Room Rental
Member Name	Rob Miyashiro
Claimant	Rob Miyashiro
Expense Category	Hosting - Individual Constituent(s) Hosting Purpose - Community Engagement (Open House)

#B1

Top Pizza & Spaghetti House
 1101 - 4 Ave South
 Lethbridge, AB T1J 0P8
 Phone (403)327-1952
 www.top-pizza.com
 Business # GST# 859430548

 Date: Jan 20, 2026 Time: 12:46PM
 Server: Kiara
 Bill: 0001 Table : B1

2	LUNCH #6	36.00
1	LUNCH Top Special	18.00
1	The Motor City	29.00
2	Coffee/Tea	6.00
1	LG Pop	3.00

 Subtotal 92.00
 GST 859430548 4.60

Total 96.60

Open Time : Jan 20, 2026 11:45AM



TOP PIZZA & SPAGHETTI HO
 1101 4 AVE S
 LETHBRIDGE, AB T1J 0P8
 403-327-1952

SALE

MID: 5775698
 TID: 006 REF#: 0000C002
 Batch #: 020001 RRN: 00000002
 01/20/26 12:55:20
 APPR CODE: [REDACTED]
 MASTERCARD [REDACTED] Proximity
 ***** [REDACTED] **/**

AMOUNT	\$96.60
TIP	\$19.32
TOTAL	\$115.92

APPROVED

MASTERCARD
 AID: A0000000041010
 TVR: 00 00 00 80 01

I AGREE TO PAY ABOVE TOTAL AMOUNT
 IN ACCORDANCE WITH CARD ISSUER'S
 AGREEMENT
 (MERCHANT AGREEMENT IF CREDIT VOUCHER)
 RETAIN THIS COPY FOR STATEMENT
 VERIFICATION

THANK YOU! / MERCHANT

CUSTOMER COPY

I hereby certify that the whole of the expenditure was incurred and that amounts claimed have not previously been paid to me or on my behalf.



Legislative Assembly of Alberta
SE57884 - Staff Other Expenses Claim Form

Receipt Description	Coffee, Cookies and Cups from Founders Coffee
Member Name	Rob Miyashiro
Claimant	Anastasia Sereda
Expense Category	Hosting - Group (Constituents of Lethbridge West) Hosting Purpose - Open House for Constituents

Hosting: \$116.26 + GST



I hereby certify that the whole of the expenditure was incurred and that amounts claimed have not previously been paid to my staff or on their behalf.

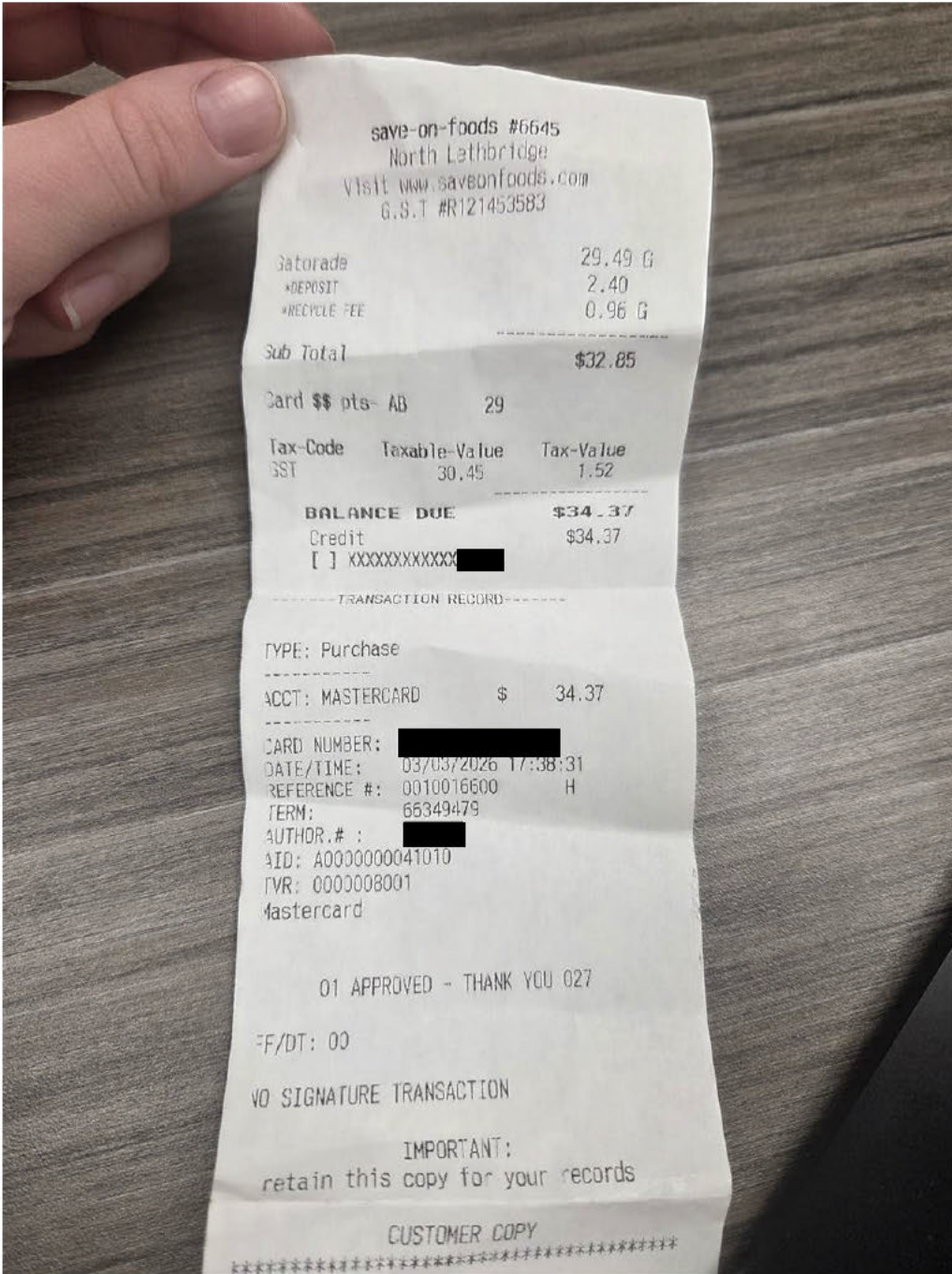
SE57884



Legislative Assembly of Alberta
SE58799 - Staff Other Expenses Claim Form

Receipt Description	Gatorade for ice time
Member Name	Rob Miyashiro
Claimant	Anastasia Sereda
Expense Category	Hosting - Group (Hokey players) Hosting Purpose - Ice time

Hosting: \$32.85



I hereby certify that the whole of the expenditure was incurred and that amounts claimed have not previously been paid to my staff or on their behalf.